



Stainless Steel Double Doors

Model: GFK3001

For added convenience, GrandFire offers Built-in Access Doors that fit perfectly under your built-in grills. Double doors will allow for entry into an island for the propane tank, gas lines, or whatever else you'd like to store inside your island.



Product Dimension:

781Wx552Hx88D mm

Out-Out Dimension:

718Wx513Hx530D mm

Packing Dimension:

822x630x123mm

Weight: 9.2kg (Gross); 7.6kg (Net)

20ft GP: 371pcs;

40ft GP: 857pcs;

40ft HQ: 1014pcs

Innovative Features:

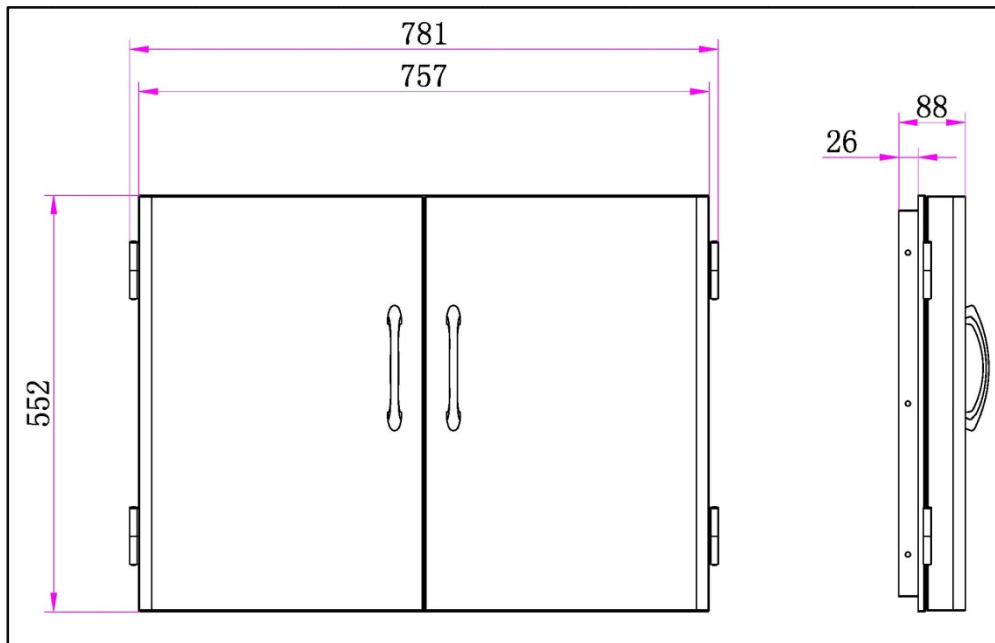
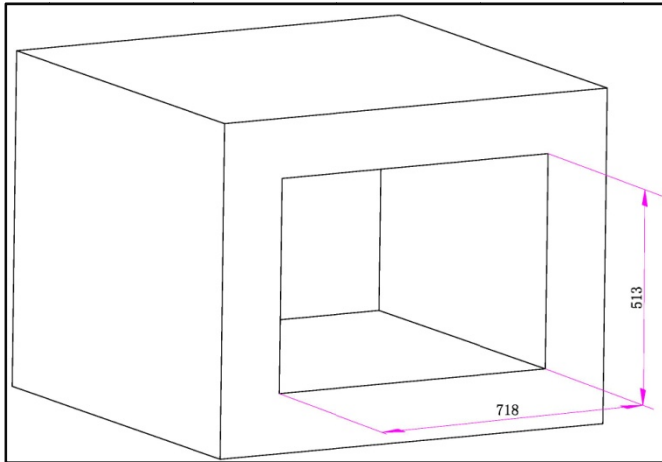
- Professional Style door handle that is chrome plated.
- Full Stainless Steel Construction (#443SS).
- Heavy duty latch for easy closing.
- Rigid welded construction to ensure strength and longevity.

HAULAND



Stainless Steel Double Doors

Model: GFK3001

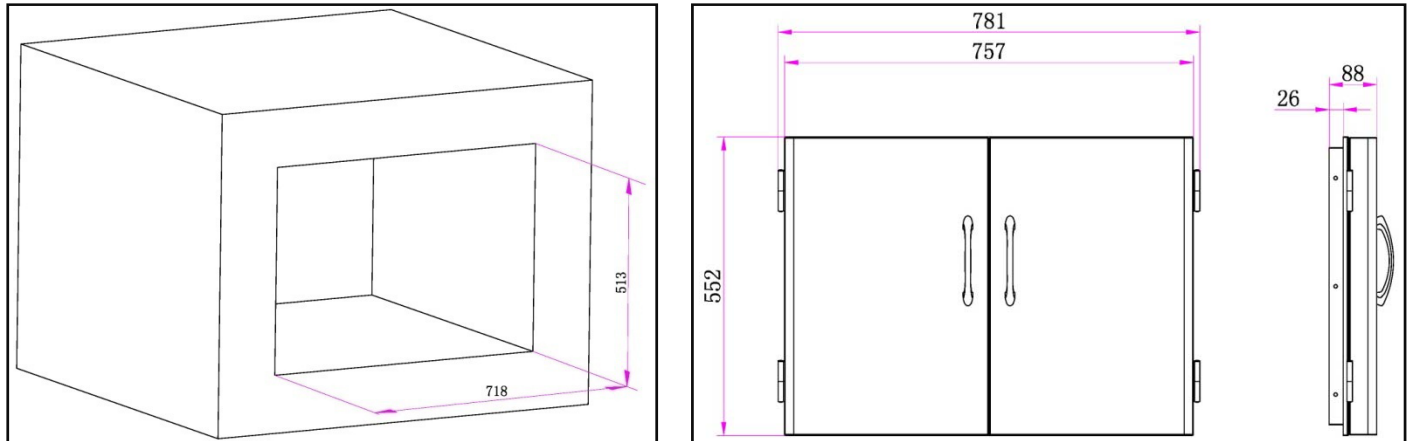


Note:

Cut-out Dimension: 718x513x530D mm

INSTALLATION INSTRUCTIONS

DOUBLE ACCESS DOORS SPECIFICATIONS: CUTOUT SPECIFICATION



NOTE: The cutout of each corner should be 90° angle in order for the unit to fit properly.

* Island installation to use minimum of 3 vents (L&R sides, back side) providing about 10 sq. in. per vents (typical).

INSTALLATION INSTRUCTIONS

- 1 Slide frame into opening (see cutout dimensions in chart above).
- 2 Check for proper alignment.
- 3 Using the four slotted holes in the frame as a guide, pre drill four pilot holes on the left & right sides of your island. Secure the unit using screws and anchors suited for the type of cabinet material.
- 4 Install the access unit and check for proper alignment of the doors and frame.



CARE & MAINTENANCE

All parts of the Professional Access Double Doors can be cleaned with hot soapy water, rinsed, dried and buffed to a shine with a soft, heavy cloth.

Always try this first, as it is the mildest cleaning procedure. Always rub in the direction of the grain. Use only clean sponges, soft cloths, paper towels, plastic non-metal soap pads for cleaning or scouring as recommended in this section.

Use only soap pads with soap still in them. An empty pad can scratch.

After cleaning, use a stainless steel polish, such as the exclusive stainless cleaner applied to the doors and handle surfaces. To touch up noticeable scratches in the stainless steel, sand very lightly with wet 100 grit emery paper in the direction of the grain.

NOTE: Stainless steel tends to corrode in the presence of chlorides and sulfides, especially in coastal areas. To ensure corrosion prevention, wash all stainless steel surfaces every 3-4 weeks with fresh water and stainless cleaner.

